



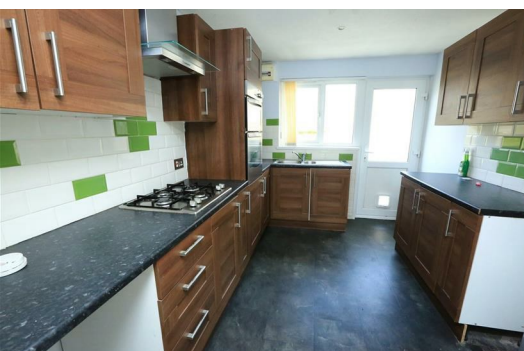
1 Alden Walk

Eggbuckland, Plymouth, PL6 5RY

£675 Per Calendar Month



An end terraced house which is available now. It has a good sized garden, with garage and parking. The accommodation includes two bedrooms and bathroom, lounge/dining room and fitted kitchen. It is a long term rental which is unfurnished. Strictly no pets or smokers.



1 ALDEN WALK, EGGBUCKLAND, PLYMOUTH PL6 5RY

ACCOMMODATION

ENTRANCE HALL

Access is gained via a double glazed entrance door. Stairs to first floor accommodation.

LOUNGE/DINING ROOM 24'3" x 10'0" (max measurements) (7.41 x 3.05 (max measurements))

Door from hallway. Dual aspect room with windows to front and rear.

KITCHEN 12'1" x 8'10" (3.69 x 2.70)

Range of matching eye and base level units. Inset sink unit. Built in storage cupboard. Plumbing for washing machine. Built in oven and hob. Window and door to rear.

LANDING

Small area with storage cupboard.

BEDROOM ONE 13'4" x 8'9" (4.08 x 2.67)

Window to front. Small built in cupboard.

BEDROOM TWO 9'8" x 9'3" (2.96 x 2.82)

Window to rear.

BATHROOM 7'2" x 6'2" (2.20 x 1.90)

White modern suite including a bath, low level toilet and sink. Double glazed window to the rear.

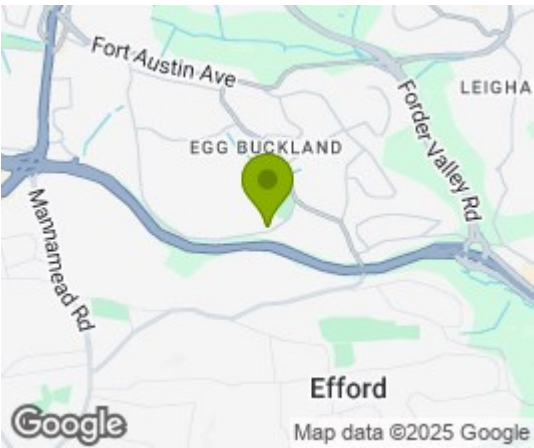
OUTSIDE

There are open plan lawned and planted front garden area. To the rear there is a walled and fence enclosed level terraced garden, with various lawned and patio/ gravel areas. There is a gate leading to the parking and garage.

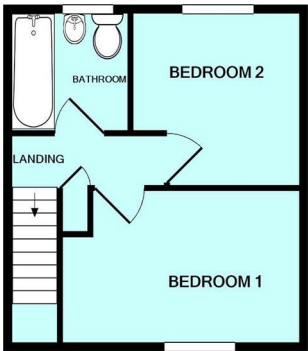
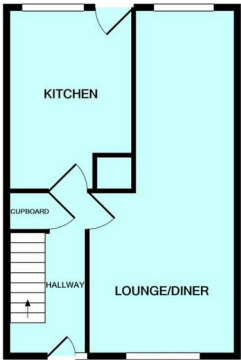
GARAGE

Single garage with up and over door. Parking space adjacent to the garage.

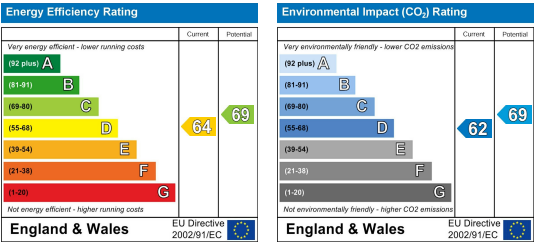
Area Map



Floor Plans



Energy Efficiency Graph



These particulars, whilst believed to be accurate are set out as a general outline only for guidance and do not constitute any part of an offer or contract. Intending purchasers should not rely on them as statements of representation of fact, but must satisfy themselves by inspection or otherwise as to their accuracy. No person in this firm's employment has the authority to make or give any representation or warranty in respect of the property.